

EST. 1926

**SAUER**  
SYSTEM

# RULE INSTALLATION MACHINES

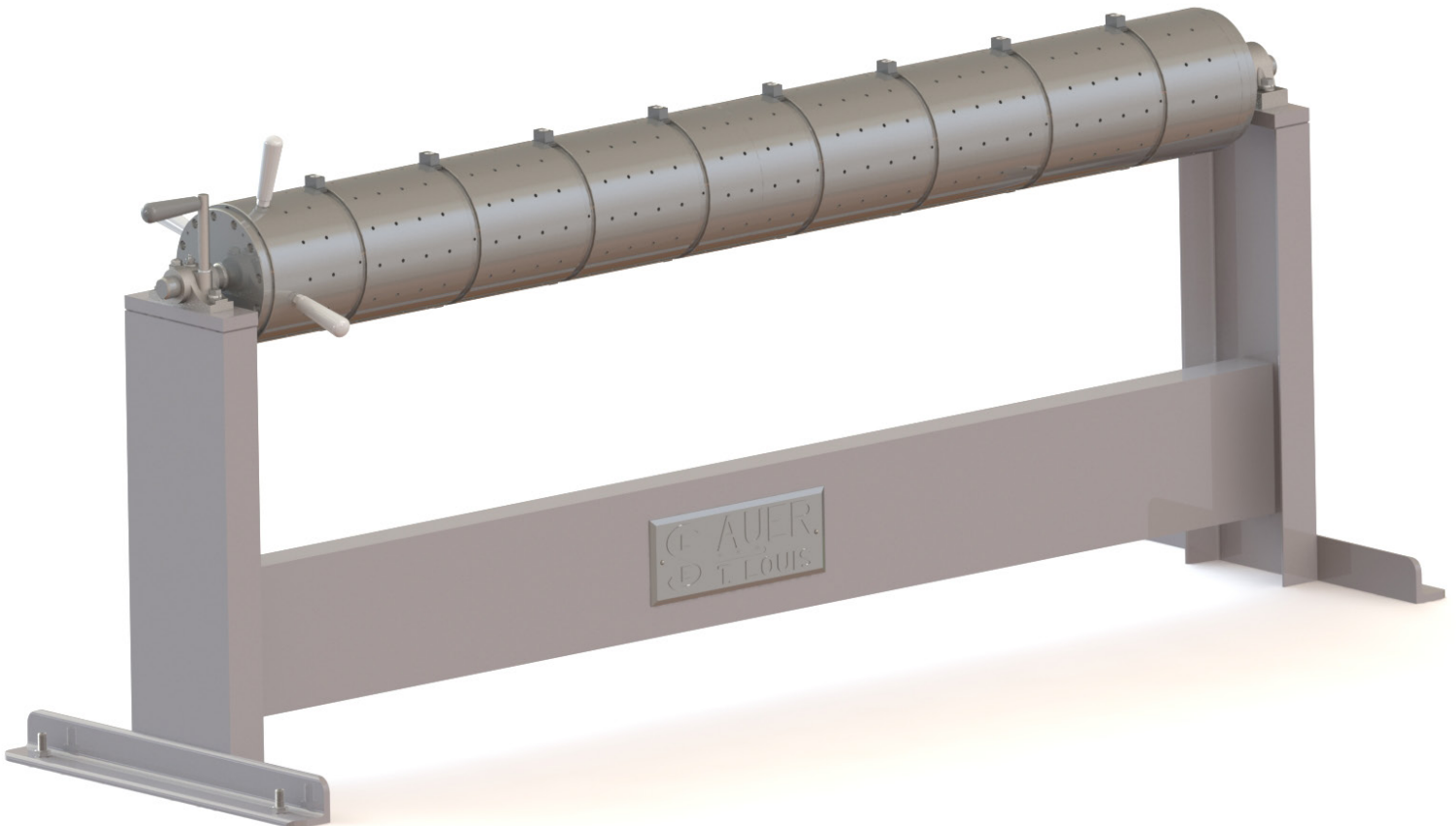
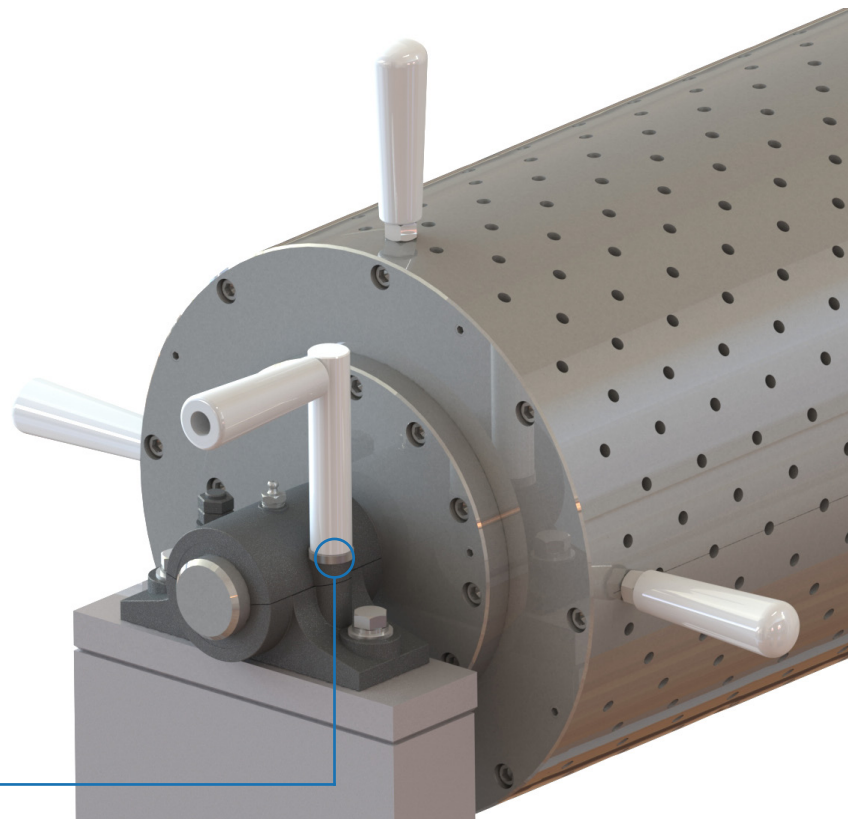
Sauer System Rule Installation machines feature a cast iron cylinder mounted in bearings, set in a channel iron frame.

Machines can simulate virtually any size die cylinder and include special features such as horizontal or vertical channels, ejector pin holes, and threaded inserts for die mounting.



# Features & Benefits

- Can simulate virtually any size die cylinder.
- Cylinder diameters and grid patterns meet OEM specifications but can be modified for your application.
- Can be customized to meet the needs of your floor plan.
- Cast iron cylinder reduces noise during knife installation.
- Proprietary braking system allows cylinder to be locked in position.





# Options

