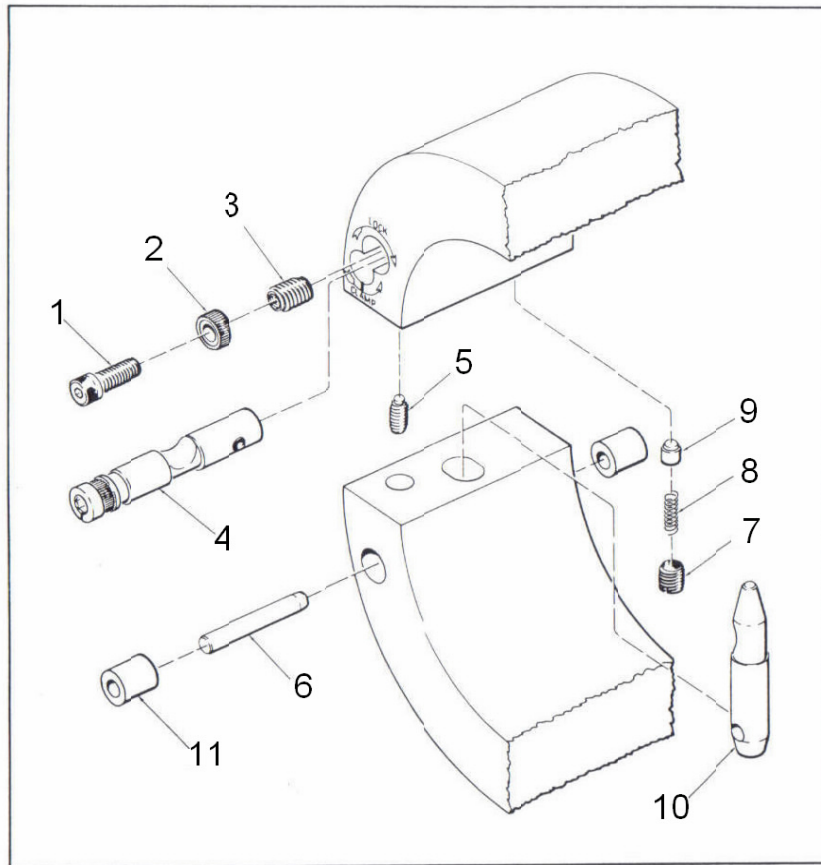


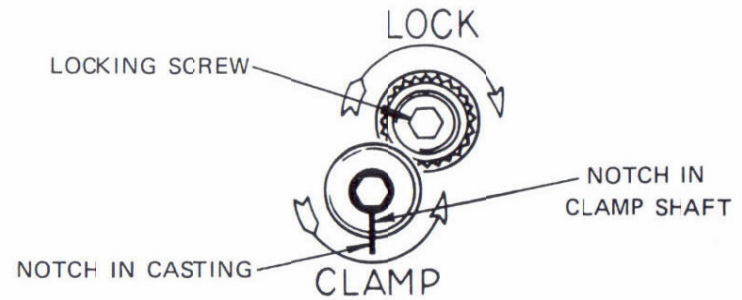
# SAUER SYSTEM KAM-LOK



Item No.	Description	
1	LOCKING SCREW	
2	LOCKING WHEEL	
3	ROSAN INSERT	
4	CLAMPING SHAFT	
5	SHAFT RETAINING SCREW	
6	DOWEL PIN	
7	CAP	
8	SPRING	} <i>Furnished as assembly</i>
9	PLUNGER	
10	CLAMPING PIN	
11	DOWEL PIN BUSHING	

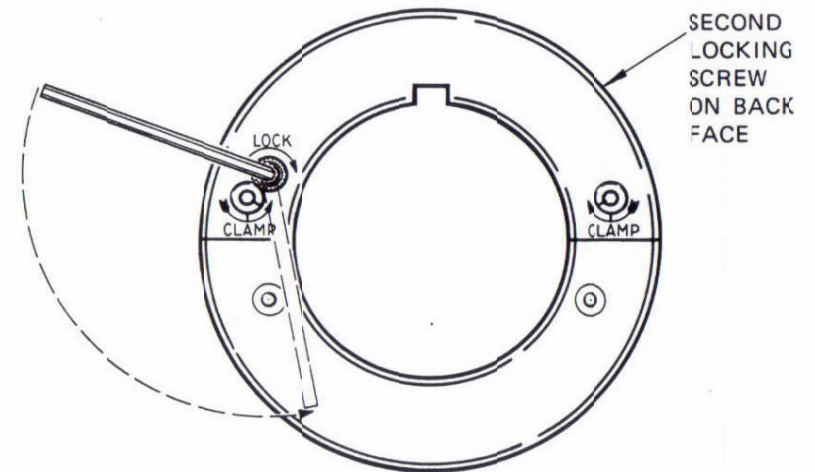
The illustration and descriptions on page i of this booklet show all of the components of the SAUER SYSTEM KAM-LOK assembly.

The illustration below is a side view of the parts which are used during installation and set-up. Familiarize yourself with the appearance and terms for the parts shown before attempting to use the heads.



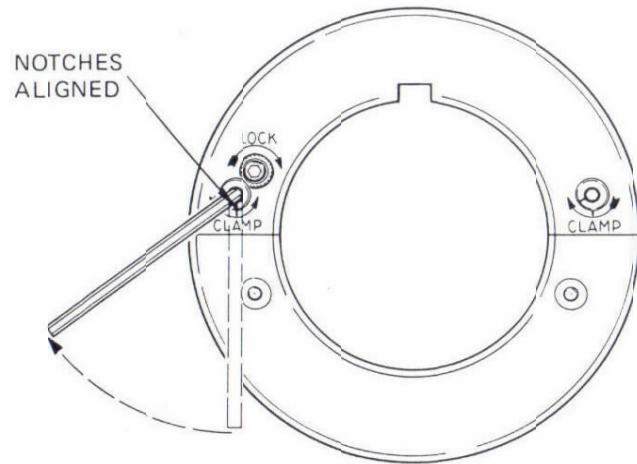
## PREPARATION

You will receive the heads assembled. The following sequence of instructions indicates how to separate the halves.

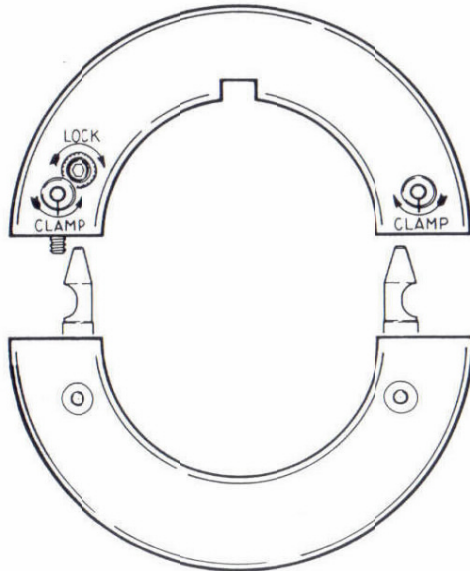


**UNLOCK BOTH SIDES OF THE HEAD.** Insert 3/16" Allen wrench in the locking screw and rotate in the opposite direction of the arrow approximately 1/2 turn.

## PREPARATION (Cont'd.)

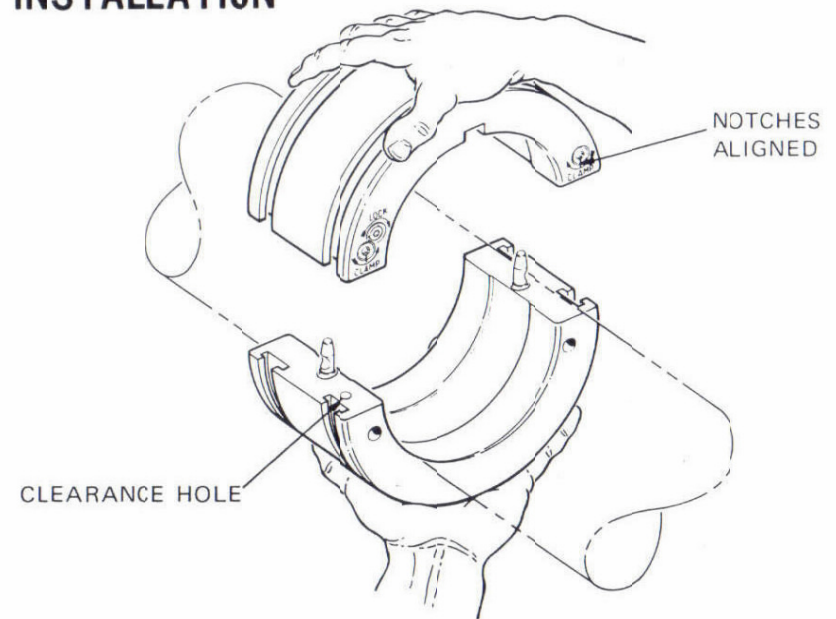


**UNCLAMP BOTH SIDES OF THE HEAD.** Insert the 3/16" Allen wrench in the clamp shaft and rotate in the opposite direction of the arrow as far as it will turn. (The notches in the clamp shaft and casting will be aligned when the head is unclamped.)

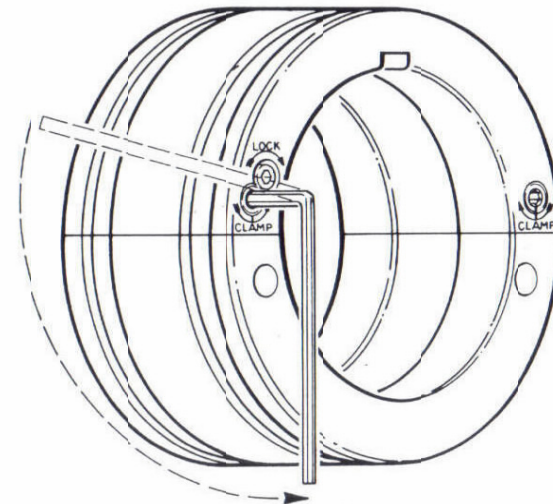


**SEPARATE THE HALVES.** The separated halves should be laid on their sides (faces) to insure that the vertical pins and retaining screw are not damaged.

## INSTALLATION



**ASSEMBLE ON SHAFT.** Hold the lower half of head (half with vertical pins) on the shaft and mate the top half. The retaining screw will fit into the mating clearance hole when parts are properly lined up.



**CLAMP THE SIDE NEAREST YOU.** Insert a 3/16" Allen wrench into clamping shaft and rotate in the direction of the arrow until tight.

# *SAUER* *SYSTEM*

**SAUER<sup>®</sup>**  
**EST. LOUIS**  
SINCE 1926

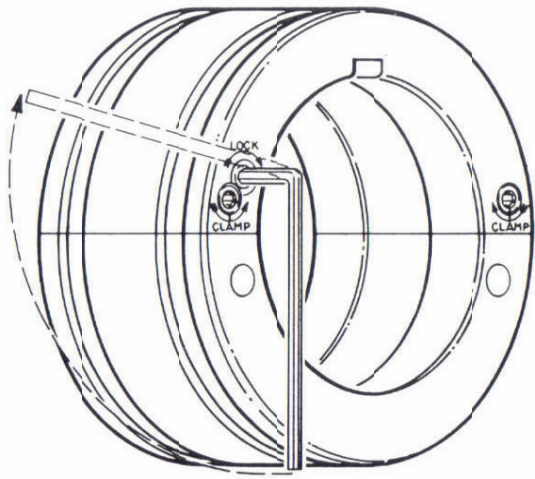
## **KAM - LOK**

### **Operating Instructions**

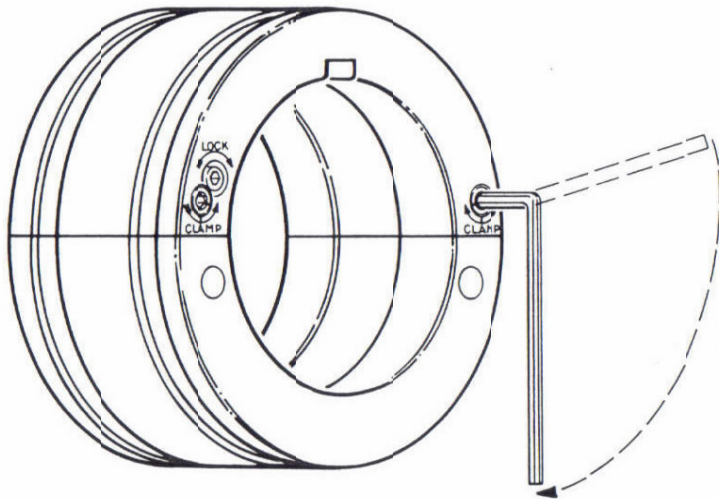
**SAUER<sup>®</sup>**  
**EST. LOUIS**  
SINCE 1926



## INSTALLATION (Cont'd.)

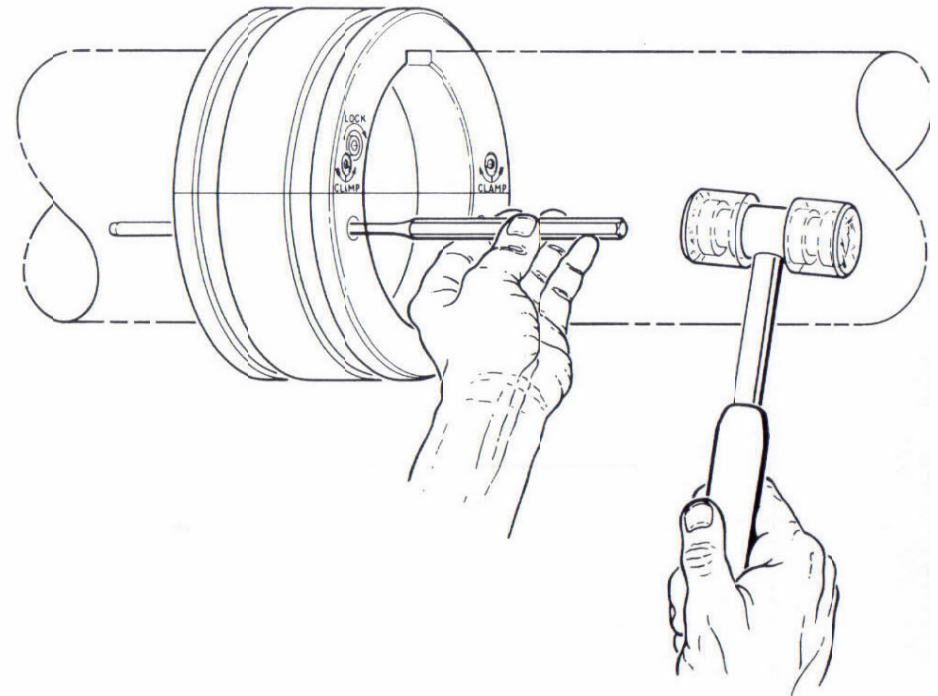


**LOCK THE SIDE NEAREST YOU.** Insert the 3/16" Allen wrench in the locking screw and rotate in the direction of the arrow until tight.



**LOCATE ON SHAFT.** Move the mated halves of the head to the desired position on the shaft. Insert the 3/16" Allen wrench into the clamp shaft farthest away from you and rotate in the direction of the arrow. (This can be done from either face.) The head is now clamped securely in position. (NOTE: Only one side of the head need be locked. The second locking screw can remain loose.)

## EMERGENCY REMOVAL



Emergency removal of the head can be accomplished without damage to the Kam-Lok device or the head itself. Simply **remove the dowel pins** from the lower half of the head as shown in the illustration above.

**NOTE**—This method of removal should be used only when the normal means cannot be used.